



**Feeding  
Gloucestershire**

**Gloucester City Launch  
May 2023**

# Feeding Gloucestershire

## **Vision**

*For Gloucestershire to be a county where everyone can enjoy good sustainable food, and nobody goes hungry.*

## **Mission**

*Feeding Gloucestershire will drive systemic change to build food security across all communities in Gloucestershire.*

## **Aims and Objectives**

### **Strategic Aims**

1. To find sustainable solutions to helping people who are struggling with low incomes or debt to access good food that they can afford.
2. To champion systemic change to build food security, creating local, equitable and sustainable healthy food provision.
3. To reduce food waste.
4. To facilitate equitable access to emergency food provision.
5. To build community resilience and promote social inclusion, cohesion, and connection through food.
6. To help tackle the root causes of food poverty.

## **District Work**

Each of our districts is unique and these district launches have given us the opportunity to identify the unique strengths of each district and also where support is needed – giving us the opportunity to connect across sectors.

## **County Work**

Currently we have several projects at district level -

- Free School Meals – we are working with Gloucestershire County Council to look at the possibility of piloting Feeding Britain's pilot program to auto-enrol eligible children for free school meals.
- Healthy Start Vouchers – Gloucestershire has a low uptake rate of Healthy Start Vouchers, so we are working with Gloucestershire County Council to promote the scheme and improve uptake.
- HAF – Our focus with HAF work will be food education and enabling children to connect with where their food comes from.



# Sustainable Food Places

**Jenny Salter**

Sustainable Food Places Coordinator for Gloucestershire

[jenny.salter@fwag.org.uk](mailto:jenny.salter@fwag.org.uk)

***Working with***

[The Gloucestershire Food and Farming Partnership \(GFFP\)](#)

[Feeding Gloucestershire](#)

[Farming and Wildlife Advisory Group \(FWAG\)](#)

[Gloucestershire County Council](#)

[Visit Gloucestershire](#)

[Gloucestershire Rural Community Council \(GRCC\)](#)

***And many more....***



# Sustainable Food Places in Gloucestershire

From 2022 Gloucestershire became part of the SFP programme of 80+ pioneering food partnerships supported by the Soil Association, Food Matters and Sustain (funded by National Lottery and Esmée Fairbairn).



## Sustainable Food Places Award

The Sustainable Food Places Award is designed to recognise and celebrate the success of those places taking a joined up, holistic approach to food and that are achieving significant positive change on a range of key food issues.

[Find out more](#)

SFP have a 6 key Issues Framework

1. **Food Governance and Strategy**
2. **Good Food Movement**
3. **Healthy Food for All**
4. **Sustainable Food Economy**
5. **Catering and Procurement**
6. **Food for the Planet**

**GREAT Food Gloucestershire - This is a campaign to showcase and share the great work people across Gloucestershire are doing relating to food – we are aiming to celebrate this by achieving our Sustainable Food Places Bronze Award**

Membership of SFP will act as a springboard to unite the county behind a nationally recognised scheme, putting Gloucestershire on the map alongside those counties who demonstrate a strategic approach to their food system.

# What support can SFP offer Gloucestershire?



**SUGAR  
SMART**



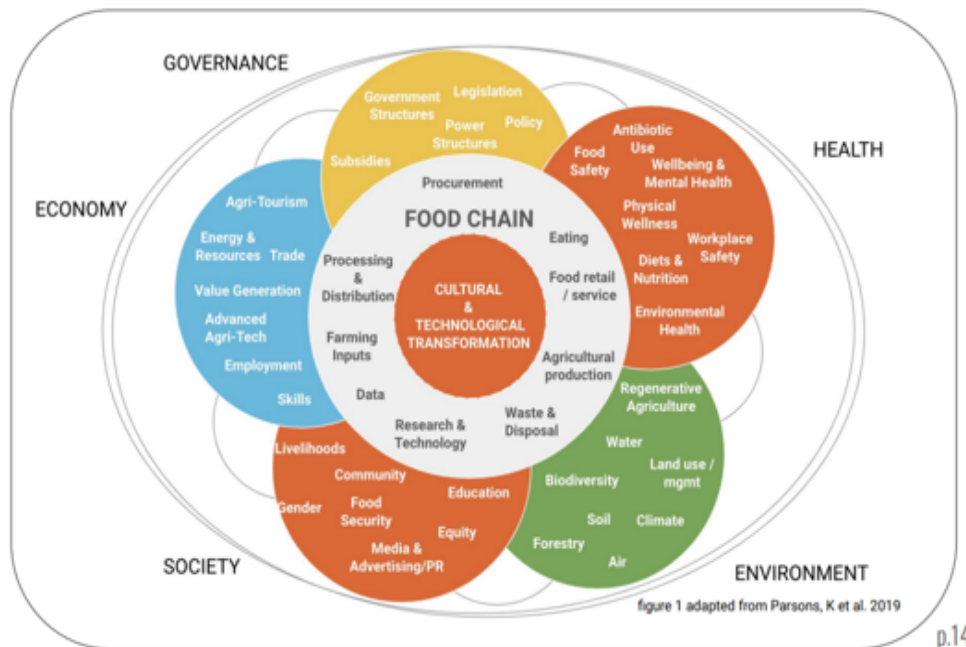
- ✓ Advice, support & skills – via the SFP Toolkit, Coordinator Catch-ups, Counties Group, Peer Link, Newsletters, Events, Website, Rise-Up Mailing List.
- ✓ A Sustainable Food Places Coordinator working with FG/GFFP
- ✓ Campaigns – To join in National Campaigns such as Every Mouthful Counts, Veg Cities and Food for the Planet...but there are many more!
- ✓ National News & Events – National Conference March 2023 and Day of Action in Westminster June 2023, policy updates on all things food.
- ✓ Funding & Grants – SFP Grants such as Good Food Economy, Sustain grants and Others open to Food Partnerships.
- ✓ Awards – We are be working towards Gloucestershire applying our Bronze Award in September.

# What could a Sustainable Local Food System in Gloucestershire look like?

## How can we get there?

## What needs to change?

### THE INTERCONNECTIONS OF GLOUCESTERSHIRE'S FOOD SYSTEM



The Covid-19 pandemic, and – more recently – soaring food prices have focused attention on how local areas meet the challenges of a fractured food system.

Local Food Partnerships (LFPs) are embedding and amplifying their work to deliver both local and national food priorities. They have been uniquely placed to provide systems leadership and practical solutions through the strategic direction and support of the **UK-wide Sustainable Food Places (SFP) programme**, established a decade prior to the pandemic.

LFPs have been able to pivot to respond with agility to an extended period of national crisis and have moved forward to offer a coherent framework for the transition of local food systems. The four dimensions of 'effectiveness', 'efficiency', 'engagement', and 'equity' highlight the value of LFPs to fill the leadership gap on local food issues.

**Jones, M., Hills, S., & Beardmore, A. (2022). The value of local food partnerships: Covid and beyond. UWE Bristol: Esmee Fairbairn Foundation and National Lottery Community Fund**



Our campaign Vision is ***'Equitable, healthy, affordable, sustainable food provision for Gloucestershire, which is good for people, and good for the planet.'***

***We are a Good Food Movement, and our mission is to engage and connect people, communities and organisations across Gloucestershire, championing and supporting a sustainable good food strategy for Gloucestershire.***

We aim to create lasting change through collaboration and partnership and an accessible platform, we will add value and develop a sustainable food provision for Gloucestershire.

## **Sustainable Food Places Awards**

'The Sustainable Food Places Awards are designed to recognise and celebrate the success of those places taking a joined up holistic approach to food and are achieving significant positive change on a range of key food issues.'

Since being in post Jenny has been working to discover the good work that is happening across Gloucestershire's food landscape – from groups setting up food projects to support their communities, to local producers supporting communities through pay it forward schemes and farmers and producers exploring more sustainable ways of growing and producing food.

Sustainable Food Places Gloucestershire is launching its campaign for the Bronze Award to recognise the good work already happening in the county.

If you would like to learn more about this campaign and how you can be a part of it please contact Jenny - [jenny.salter@fwagsw.org.uk](mailto:jenny.salter@fwagsw.org.uk)

### ***Nourishing Gloucester: Gloucester City Food Strategy – Leanne Purnell***

Leanne introduced us to the Gloucester City Food strategy which was developed using funding from the strengthening Local Communities Network. The City Council worked with Gloucestershire Gateway Trust to research, develop and write the strategy – the strategy has been informed through focus groups including statutory and VCSE groups and those with lived experience, alongside local knowledge and local and national data and was designed to build upon the work undertaken and the relationships developed during COVID, which highlighted the benefits to people and their health through accessing nutritious food and the barriers to do doing that. And recognising that through adopting the strategy there would be numerous social value benefits for communities, including improved public health, increased economic opportunities, enhanced community cohesion, and increased access to food and a positive impact on the environment to reduce waste going to landfill through encouraging the redirecting of surplus food supplies (waste food) into communities in need.

Leanne explained the primary aim of the strategy is to ensure that in future everyone in Gloucester has access to nutritious food and no one goes hungry, whilst also acknowledging that there are broader issues affecting our neighbourhoods which are closely interlinked with food insecurity. that to create sustainable long-term solutions, we must better understand and address the root causes of both food insecurity and the social, health and wellbeing inequalities that exist in some of our communities - which can only be achieved through developing and supporting good relationships with the Voluntary and Community Sector, Retailers, Food Producers and other relevant partners.

There is a need to develop an effective cross sector food partnership involving a variety of local authority departments (e.g. public health, economic development, planning, environment, communities and waste) alongside collaborations with VCSE organisations, businesses and food growers and producers to ensure a whole systems approach.

The strategy is in the final stages before print and a launch date will be announced soon

### **Breakout Questions**

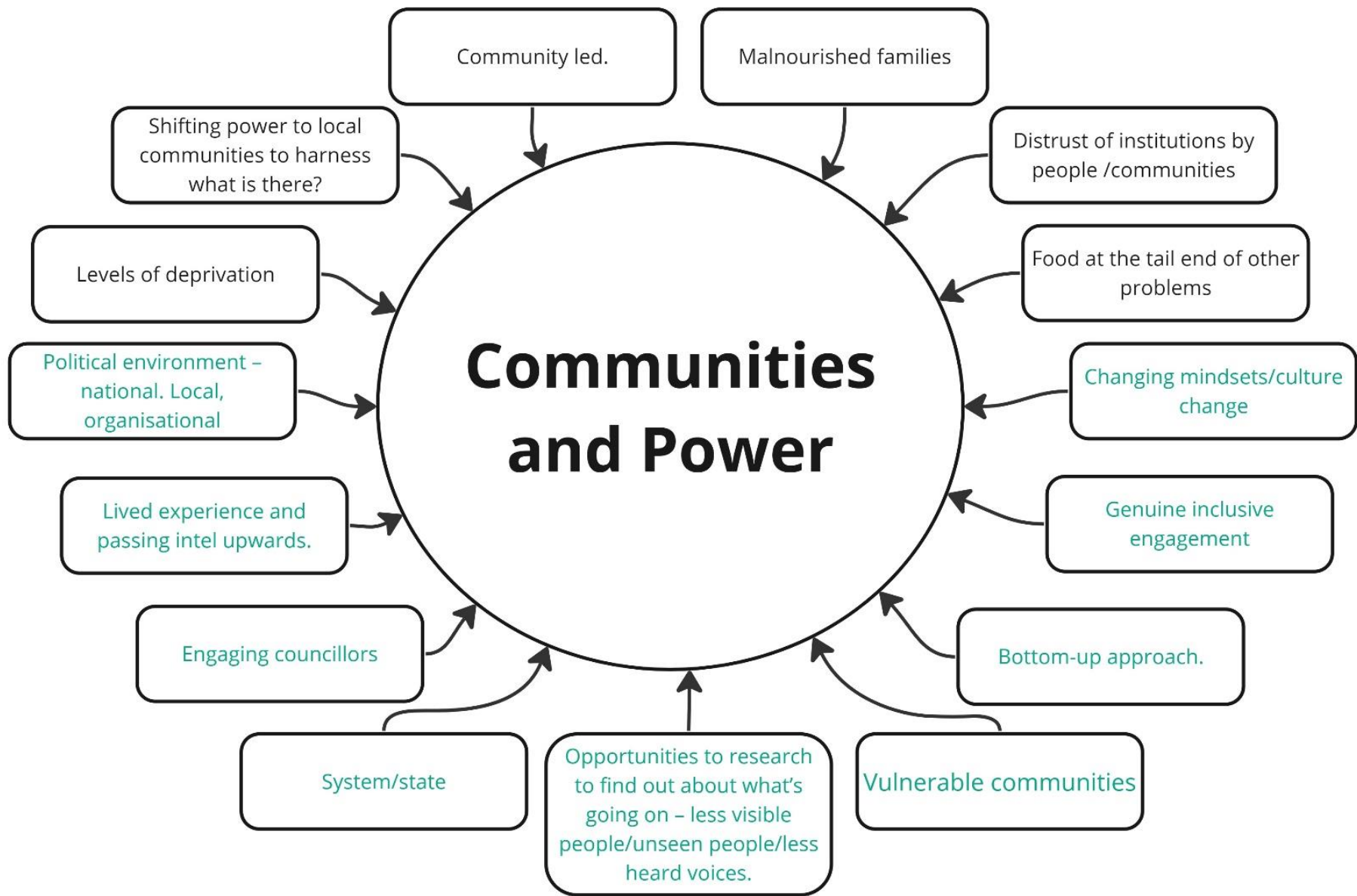
The launch gave us the opportunity to ask those present to give us insight into what was happening across Gloucester, and we asked two interlinked questions, the answers from these questions matched the information that we discovered during our Organisational Conversation Program (the Organisational Conversation program consisted of 65 conversation with organisations across the county using a question framework) and conversations that have been happening.

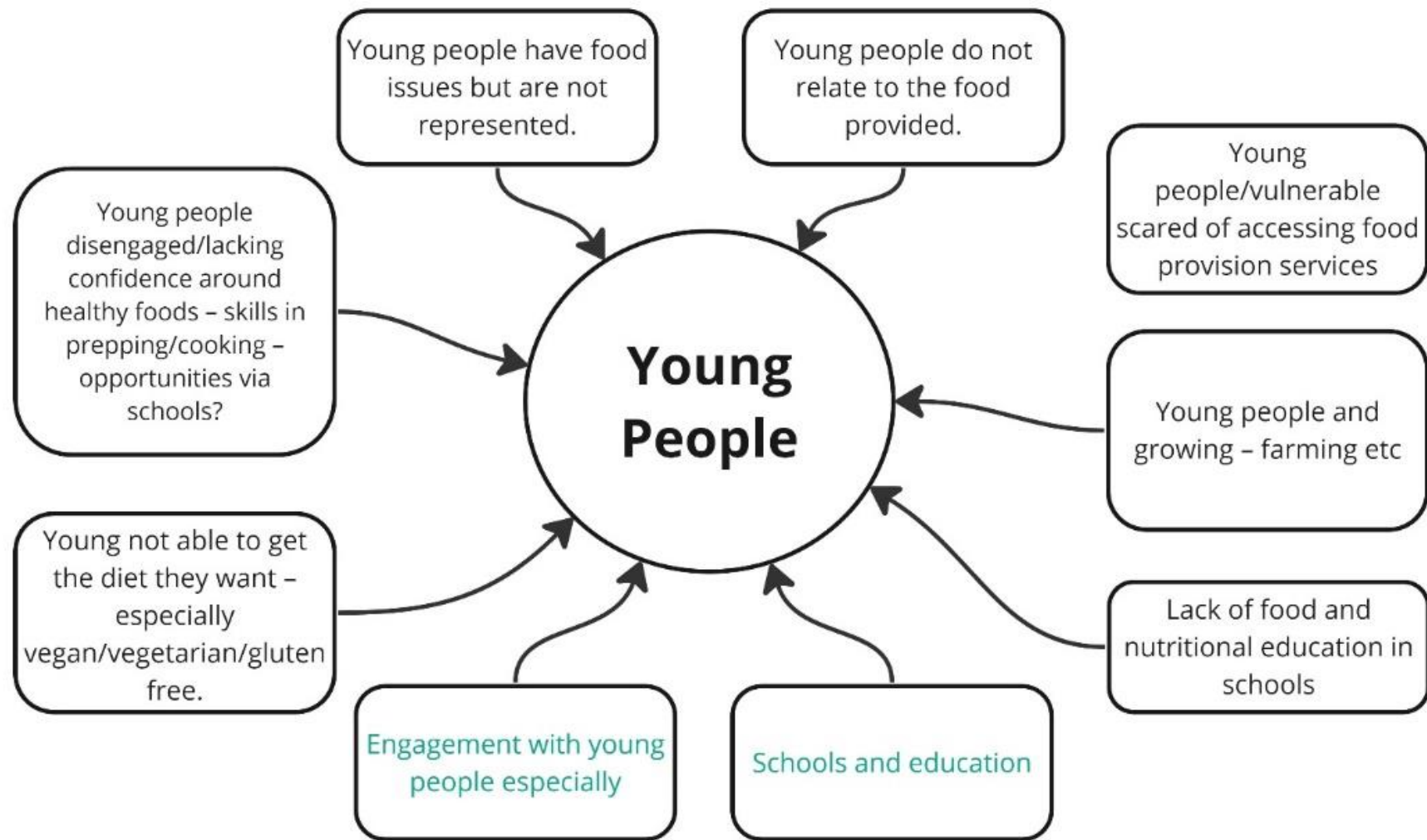
### **Our questions were:**

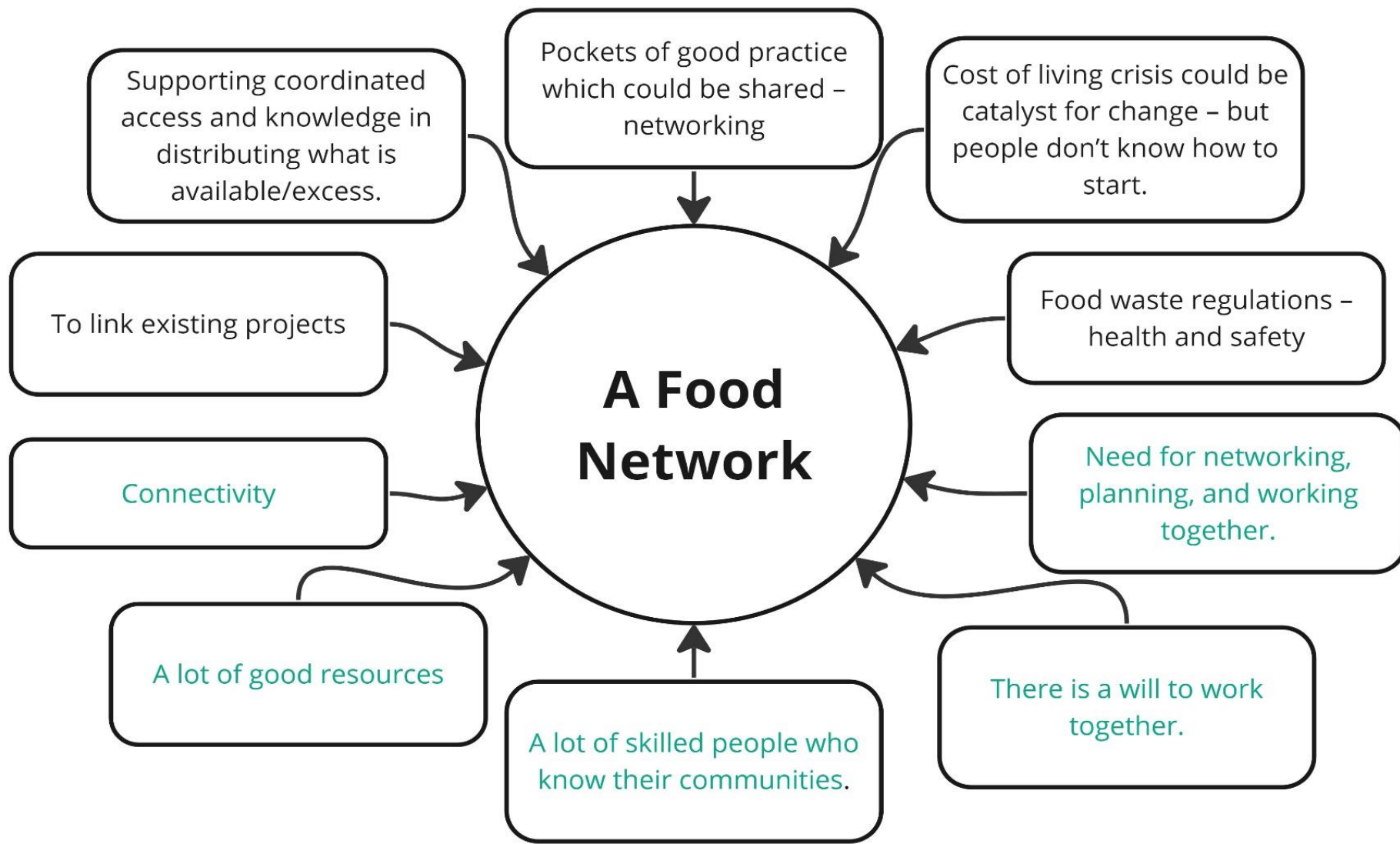
**What is happening in our communities that makes this work so important?**

**What are the challenges and opportunities we are facing?**









# A Food Network

Supporting coordinated access and knowledge in distributing what is available/excess.

Pockets of good practice which could be shared - networking

Cost of living crisis could be catalyst for change - but people don't know how to start.

Food waste regulations - health and safety

Need for networking, planning, and working together.

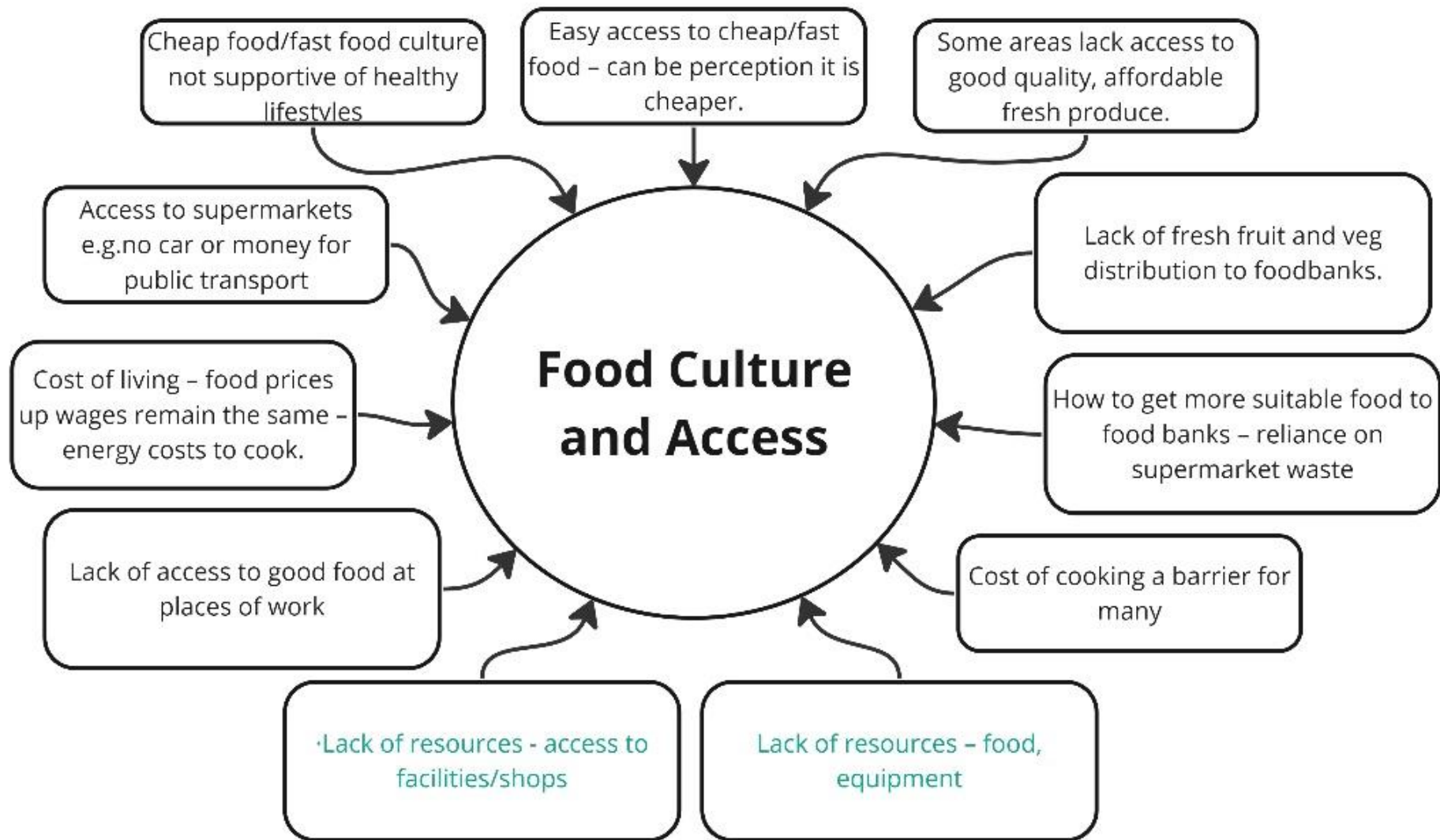
There is a will to work together.

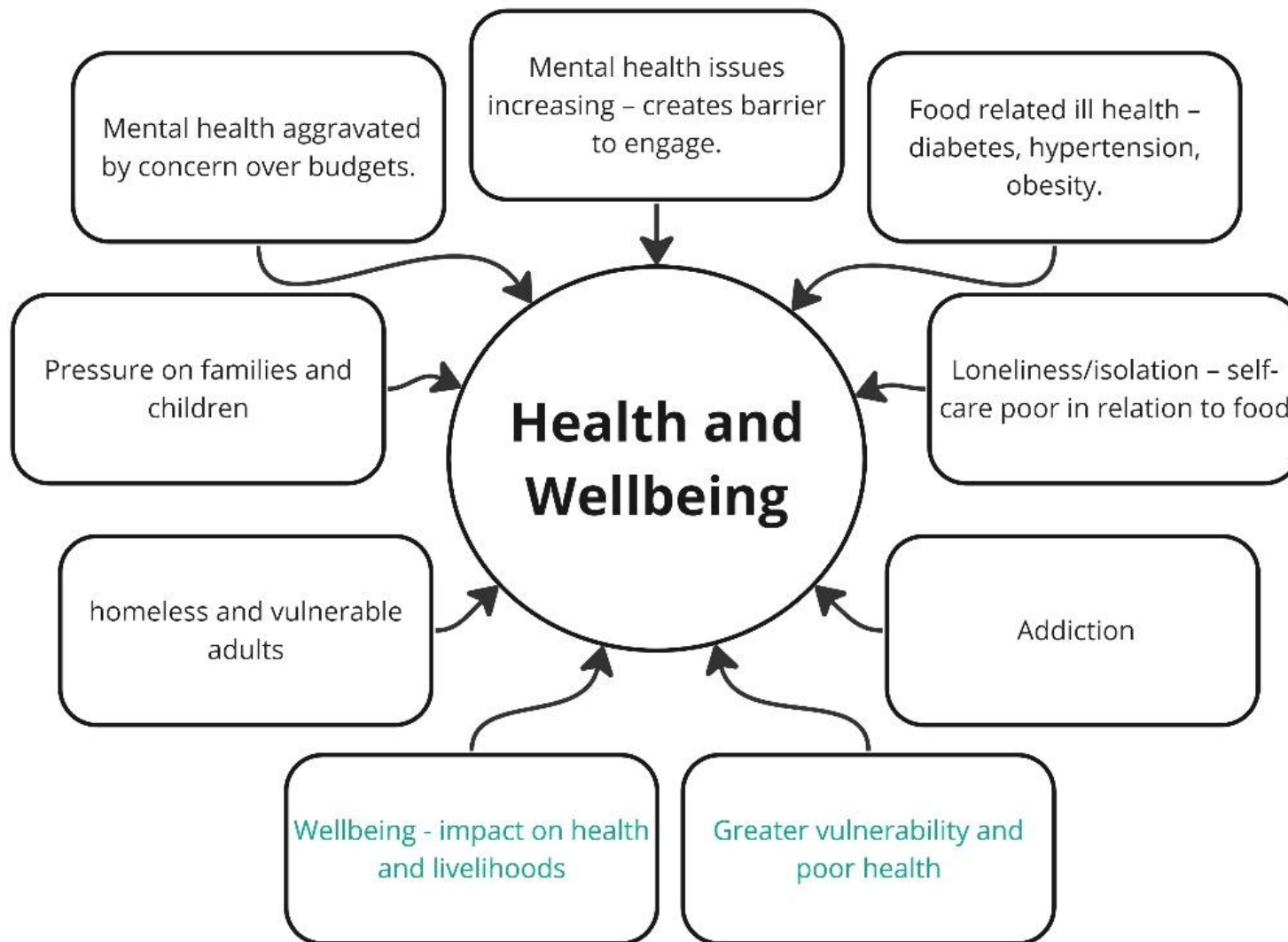
A lot of skilled people who know their communities.

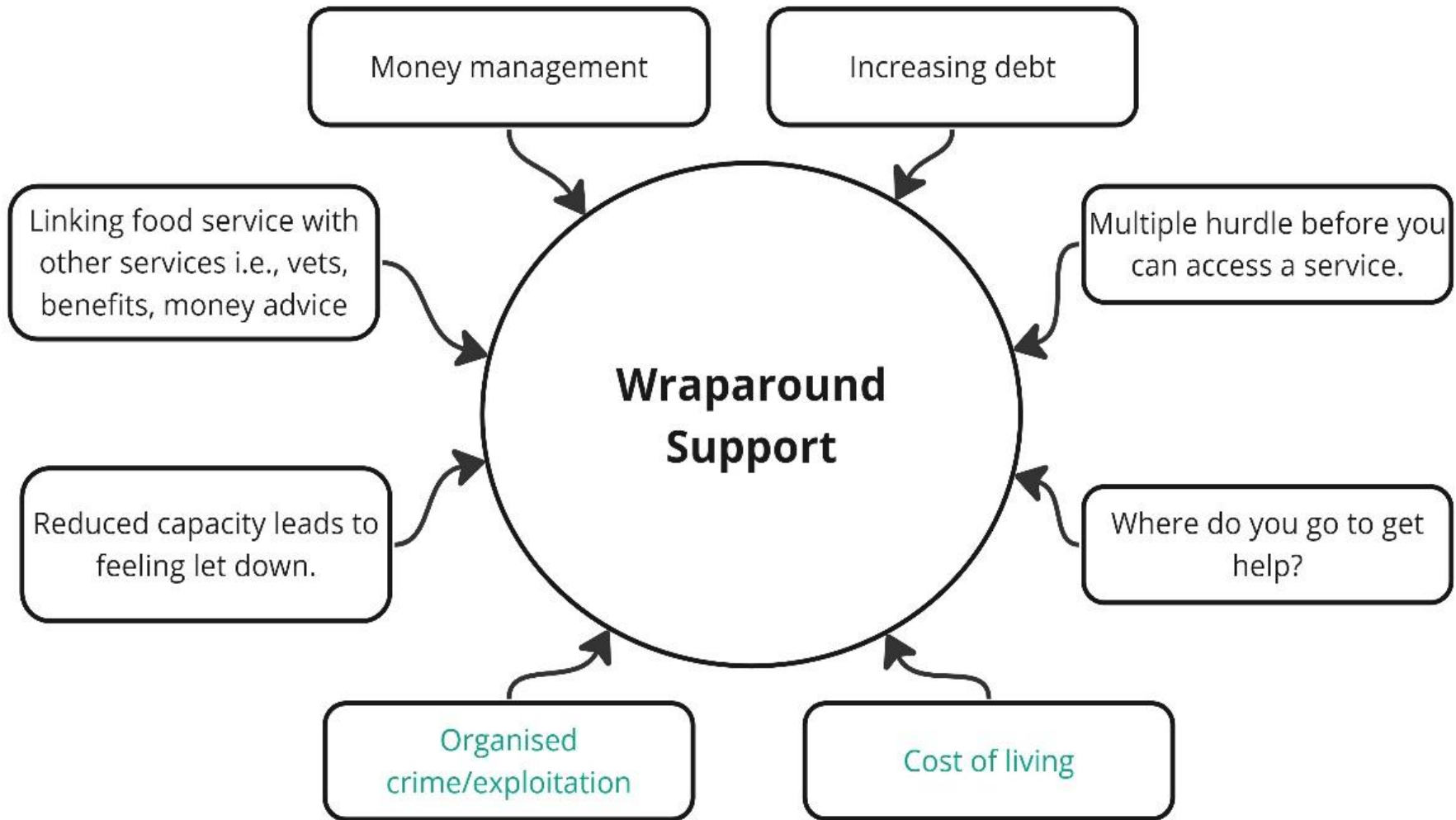
A lot of good resources

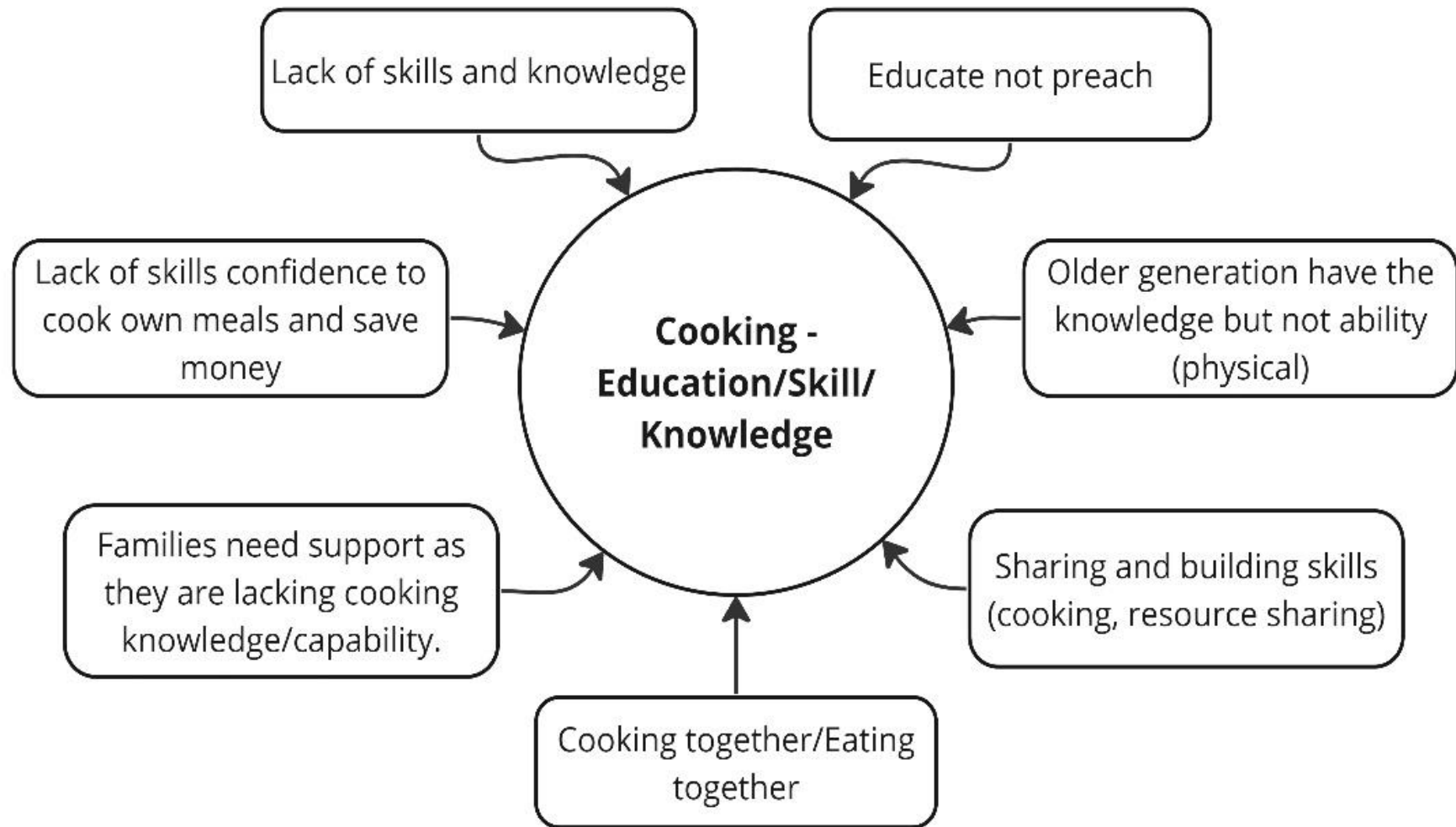
Connectivity

To link existing projects



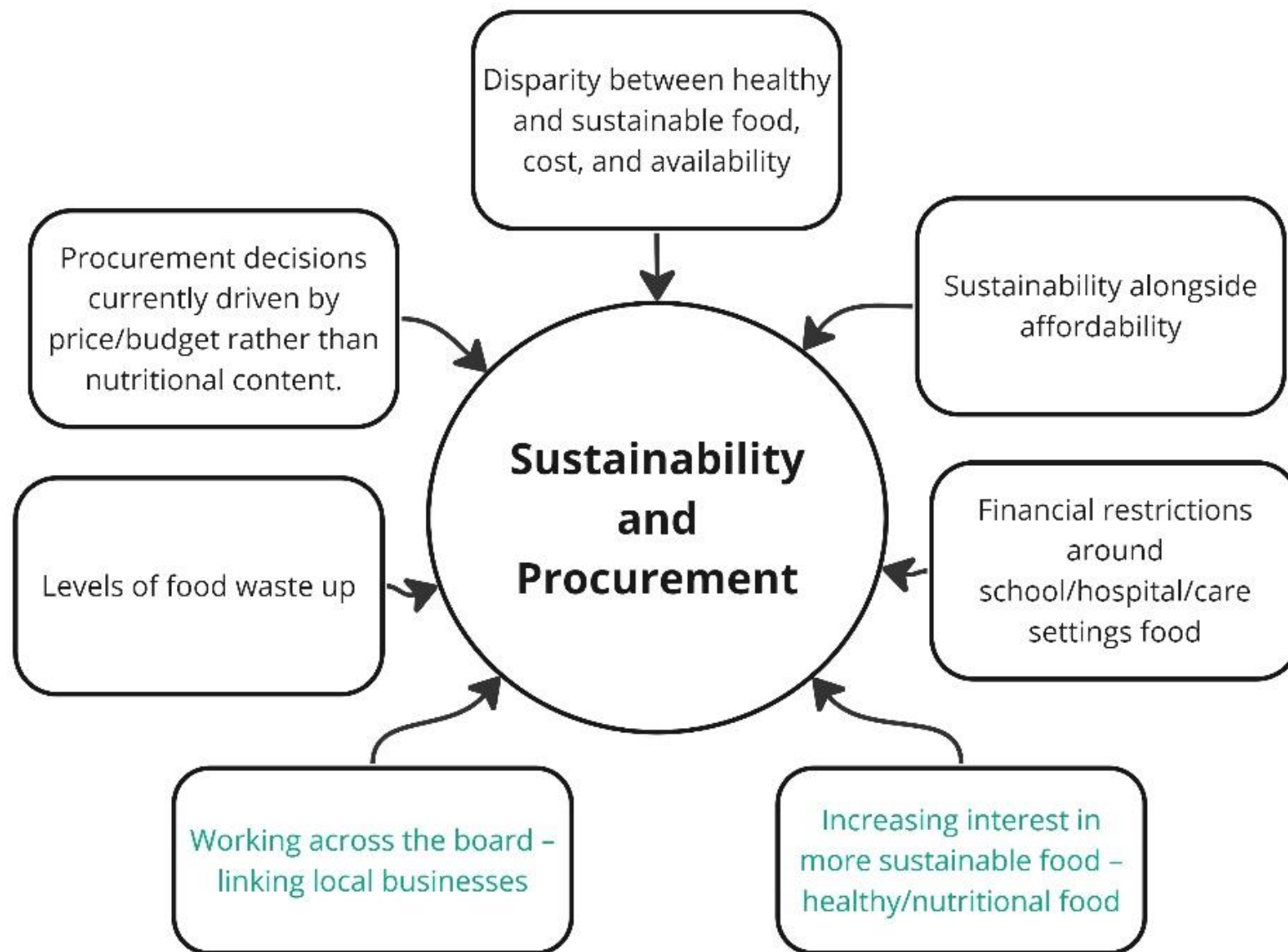


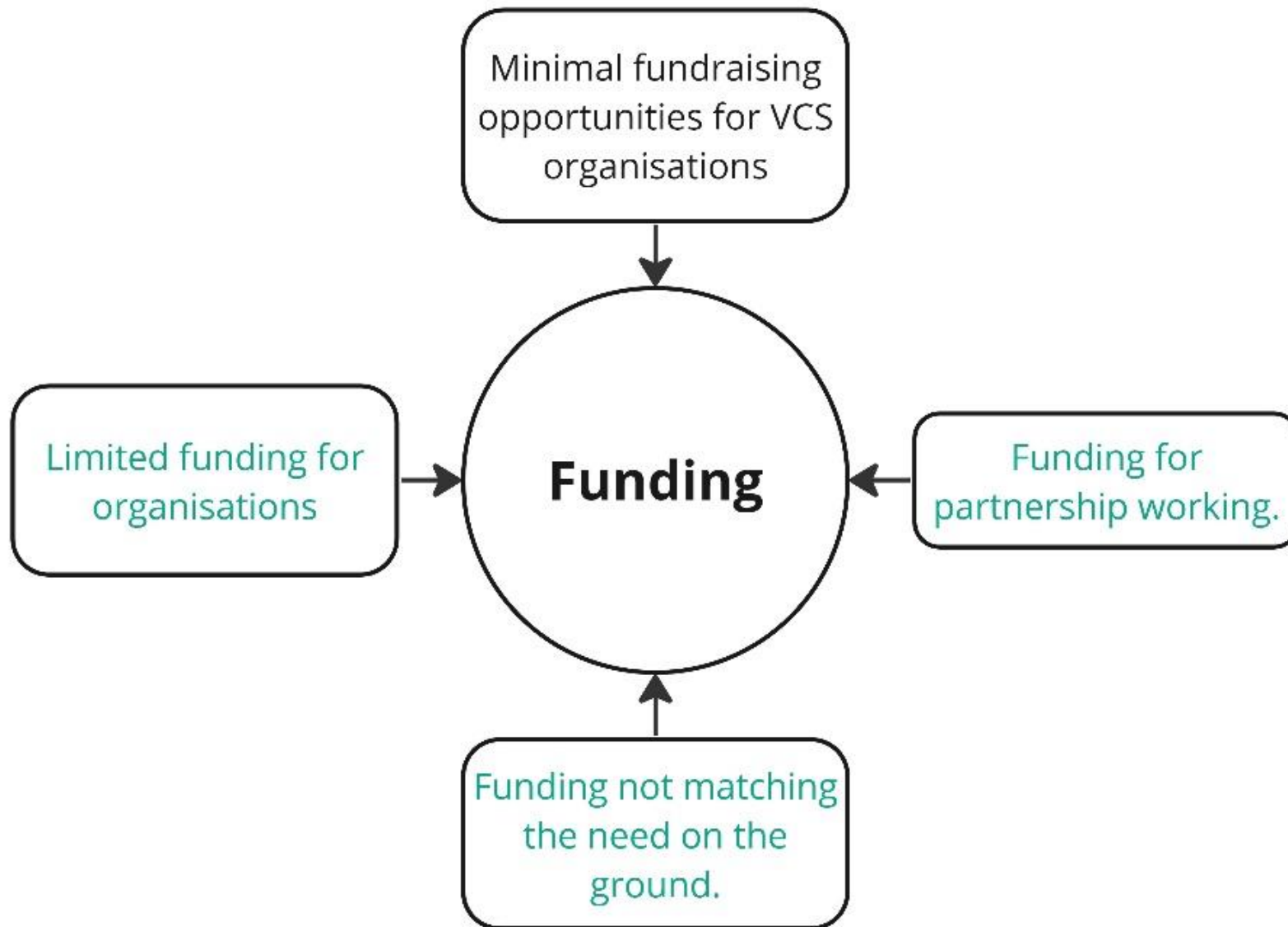


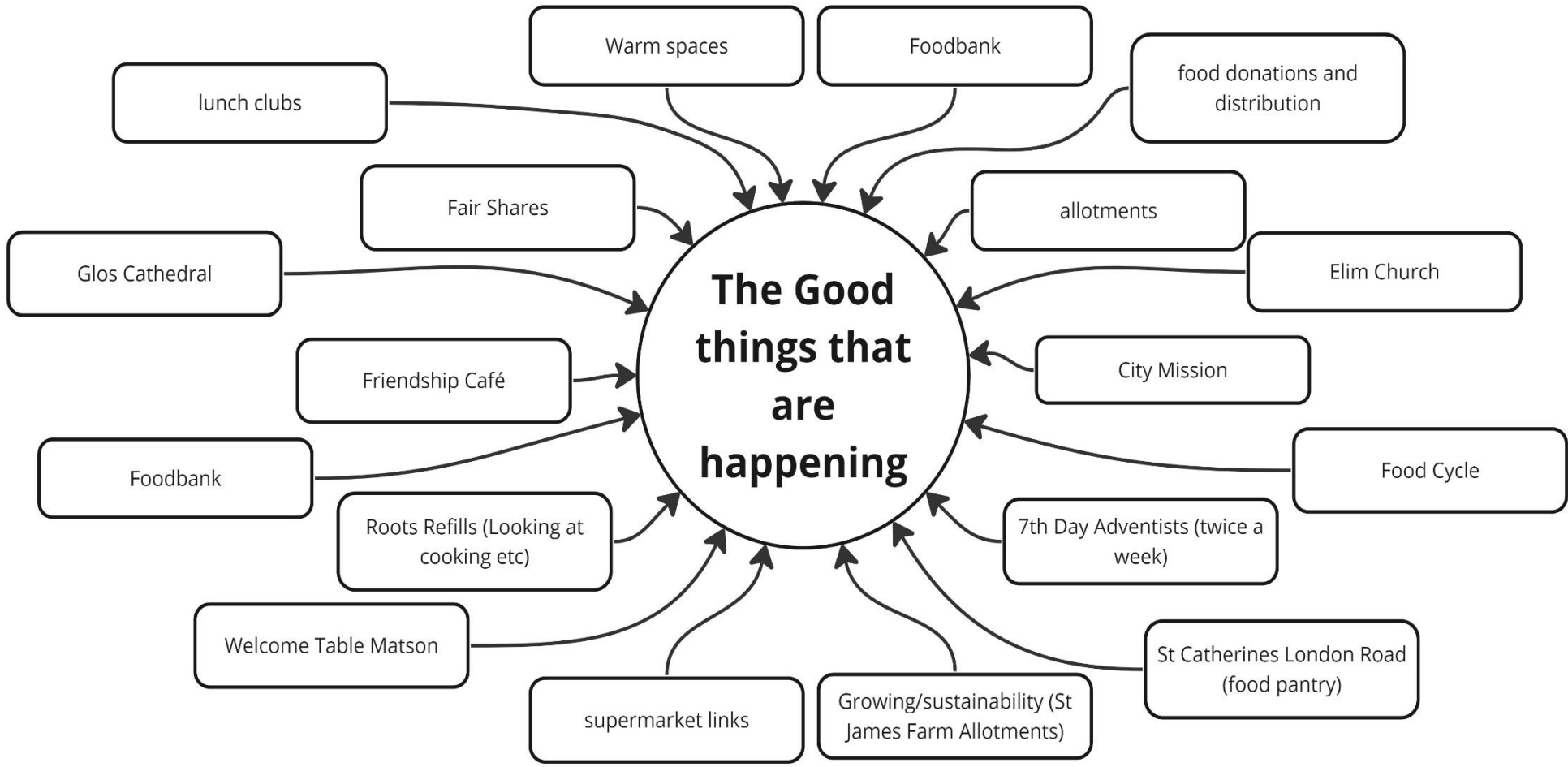












**Thanks go to**

**Team on the Day – Leanne Purnell and Lisa Jevins**

**Eat Well Wagon** – Lunch was served from the eat Well Wagon which is an asset of The Venture Community Hub based in White City. So far the wagon has been used at the Holiday Activities and Food project – the wagon gives the opportunity to take hot food into the neighbourhoods in which HAF activities are being run and the launch was the opportunity to see it in action and also take some details about how it can be hired throughout the year.

**Gloucester Services** – Gloucestershire Gateway Trust brought a taster table of food from producers local to Gloucestershire, which included breads, preserves, fruit juices and cakes.

**\*Surplus Food** – surplus food from the launch was given to Gloucester City Mission and Play Gloucestershire